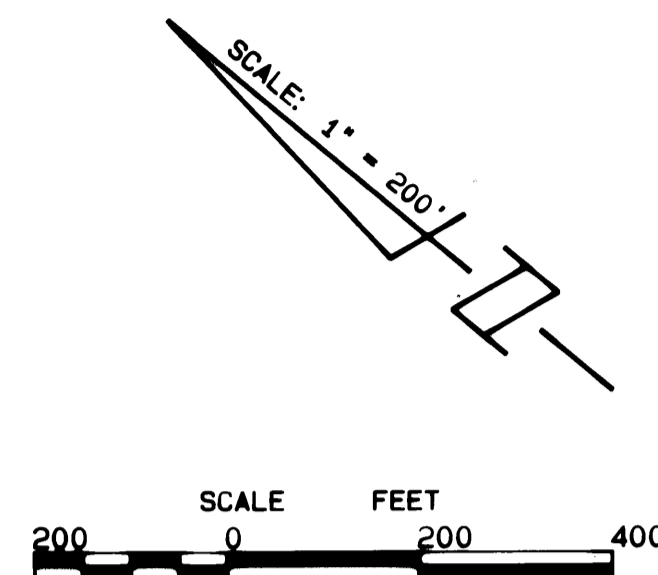
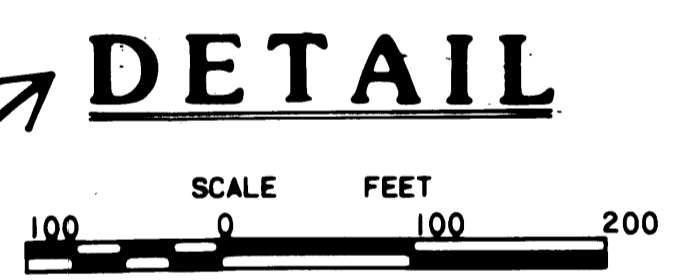
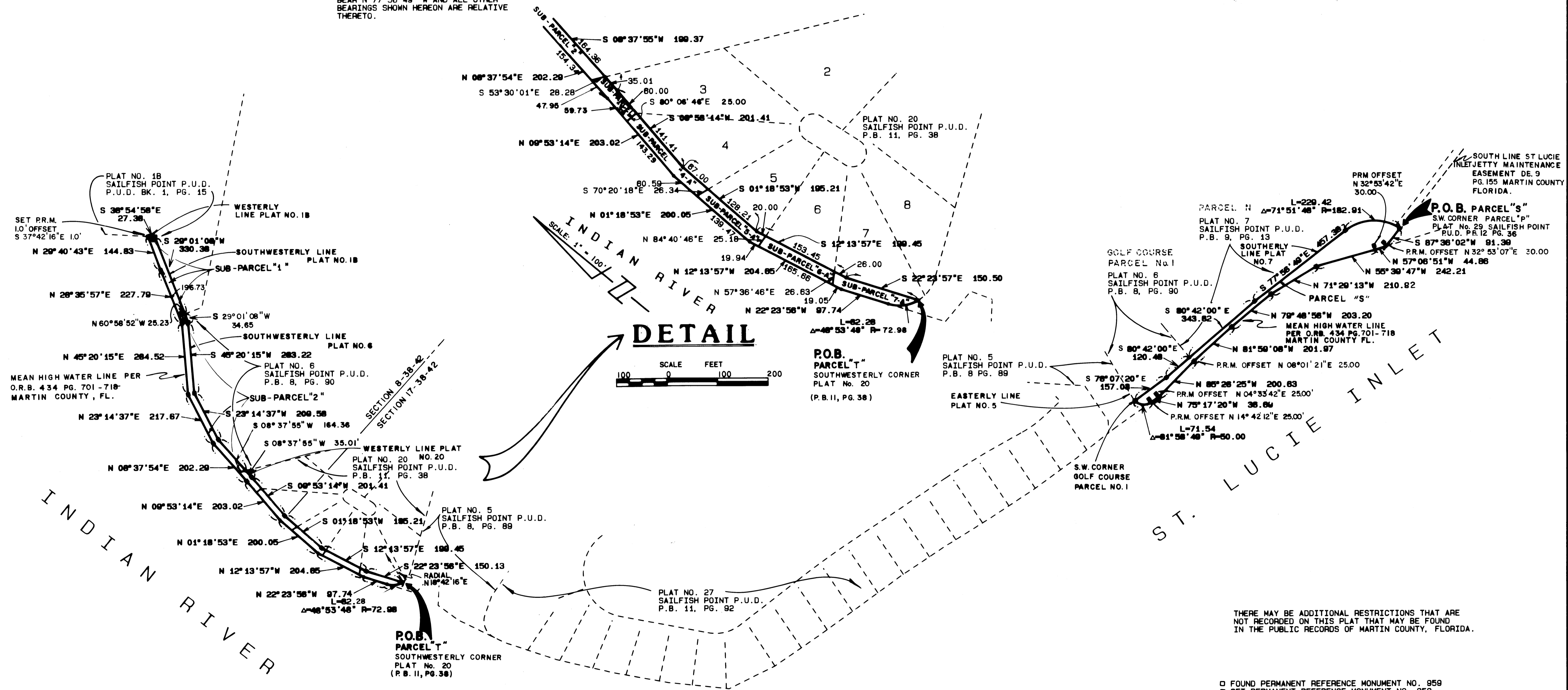


PLAT NO. 32 SAILFISH POINT P.U.D.

LYING IN FRACTIONAL SECTIONS 8 AND 17
TOWNSHIP 38 SOUTH, RANGE 42 EAST
MARTIN COUNTY, FLORIDA



BEARING BASE
THE SOUTHERLY LINE OF PLAT NO. 7
SAILFISH POINT P.U.D. IS TAKEN TO
BEAR N 77° 56' 49" W AND ALL OTHER
BEARINGS SHOWN HEREON ARE RELATIVE
THERETO.



THERE MAY BE ADDITIONAL RESTRICTIONS THAT ARE NOT RECORDED ON THIS PLAT THAT MAY BE FOUND IN THE PUBLIC RECORDS OF MARTIN COUNTY, FLORIDA.

□ FOUND PERMANENT REFERENCE MONUMENT NO. 959
■ SET PERMANENT REFERENCE MONUMENT NO. 959

LINDANI, BROWNING, FERRARI & HELLSTROM, INC. CONSULTING ENGINEERS, PLANNERS & SURVEYORS	
P.O. BOX 717 JUPITER, FLORIDA 33408	2801 13th AVENUE VERO BEACH, FLORIDA 32909
2222 COLONIAL ROAD FORT PIERCE, FLORIDA 34950	18 CENTRAL PARKWAY SUITE 428 STUART, FLORIDA 34994